



Presents...

# Tour of Buffalo

**Official Tech Guide  
May 2022**

## **TABLE OF CONTENTS**

Event Schedule.....	3
Rules and Regulations.....	4
Registration.....	5
Venue Guidelines.....	6
Neutral Support.....	6
Course Description and Maps.....	7-9
Omnium Scoring.....	10
Results and Podiums.....	11
Photography Consents.....	11
Prize Appendix.....	12
Sponsors.....	13

## EVENT SCHEDULE

Riders should report to staging 10 minutes prior to their start time for race instruction.

### **SAT, MAY 28**      **SUNY Erie Criterium** - Erie College Drive, Orchard Park, NY

Day 1

9:30am – Road Closed  
 10:00am – Cat 4/Novice Women – 40 minutes  
 10:50am - Cat 4/Novice Men – 40 minutes  
 11:40am – Masters 45+/55+ - 45 minutes  
 12:40pm – Cat 3/4 Men – 45 minutes  
 12:40pm – Cat 3/4 Women– 45 minutes  
 1:40pm – P/1/2/3 Men – 75 minutes  
 3:00pm – P/1/2/3 Women – 60 minutes

### **SUN, MAY 29**      **Marilla Road Race** - 1740 Two Rod Rd, Marilla, NY 14102

Day 2

9:05am – Cat 4/Novice Men – 3 laps – 34.7 miles  
 9:10am – Cat 4/Novice Women – 3 laps – 34.7 miles  
 11:30am – P/1/2/3 Men – 5 laps – 57 miles  
 11:30am – Cat 3/4 Men – 5 laps – 57 miles  
 11:40am – P/1/2/3 Women – 4 laps – 45.6 miles  
 11:40am – Masters 45+/55+ - 4 laps – 45.6 miles

### **MON, MAY 30**      **Downtown Criterium** – 24 S. Elmwood Ave, Buffalo, NY

Day 3

8:00am – Road Closed  
 9:00am – Cat 4/Novice Women – 40 minutes  
 9:50am - Cat 4/Novice Men - 40 minutes  
 10:40am – Masters 45+/55+ - 45 minutes  
 11:40pm – Cat 3/4 Men – 45 minutes  
 11:40pm – Cat 3/4 Women – 45 minutes  
 12:40am – P/1/2/3 Men – 75 minutes  
 2:00pm - P/1/2/3 Women – 60 minutes

## RULES & REGULATIONS

The **Tour of Buffalo** is held under USA Cycling permit #2022-5273 and all USA Cycling rules apply. USA Cycling officials will be responsible for all start/finishes, rulings, and determining end results and scoring. All races are conducted under USA Cycling and USADA anti-doping regulations. For further explanation of race rules and regulations, please go to [www.usacycling.org](http://www.usacycling.org).

### Race Details

A Criterium (crit) is a race on a short, closed course (usually 0.6 miles - 1.3 miles) consisting of racers riding laps until the specified time limit or total distance is reached. The first rider across the finish line on the finishing lap (without being lapped by the field) will be declared the winner.

A road or circuit race is a longer route held on open roads, often having a larger loop (5-20 miles) and riders completing a specific number of laps. There will be a lead car and following wheel car that will enclose the main peloton. Riders are to NEVER pass the lead car. It is there for riders' safety. Standard traffic laws apply, especially if you have fallen outside of the car convoy. Marshals will be at intersections and turns to provide additional guidance to racers. Please always follow their safety instructions on the road!

- **Feeding** – There will be no hand-ups or feeding during a crit race unless directed by the chief referee. During the road race feeding is permitted in designated areas.
- **Crit Free Laps** – For a legitimate mishap approved by the race officials, a free lap may be awarded during the race up to the final 8km of the race. All free lap rules are subject to the discretion of the presiding officials.
- **Primes** – Cash/Merch/Points primes are available for each crit race per the prize tables in Appendix A. Racers do not have to finish the race to claim a prime prize.
- **Bib Numbers** - PLEASE KEEP YOUR NUMBER! The same number will be used each day for that specific category. Proper right side/left side placement of number will be communicated daily. Lost numbers will incur a \$10 charge. Failure to properly place your number could result in improper scoring and/or fines from USA Cycling officials.

## REGISTRATION INFORMATION

Preregistration only for the Tour of Buffalo at [www.bikereg.com/ToB](http://www.bikereg.com/ToB). No day of registration available.

### Entry Fees:

- Pro/1/2/3 Men & Women: \$60
- All other categories: \$50-\$55

**Entry Discounts:** Race twice in a day and save. Second reg fee = \$20. Discount reflected in checkout total. Early Omnium registration discount applies through April 1<sup>st</sup>; and increases again May 1<sup>st</sup>.

There will be a registration tent at each stage for packet/bib pick up.

RACES WILL GO ON RAIN OR SHINE at the discretion of the chief referee. Sorry, NO REFUNDS. Prior to event, you may transfer your rider registration fee to another BBC hosted USAC race day. Riders that do not start will have their registration fee considered a donation. Optional event insurance may be purchased via BikeReg during online registration only.

## VENUE GUIDELINES

Consult the ToB event on our [website](#) for the most updated information on venues and race-course diagrams.

**Please do not litter on the course. Please leave the course and surrounding areas better than you found them. Help us make the racing day safe and enjoyable for all participants, spectators, sponsors, community hosts, residents, and business owners by following these guidelines:**

- Park in designated parking areas or in legal on-street parking. Adhere to specific parking requests in each venue map.
- No vehicle parking, tents or chairs in any roadway or public right of way such as alleys and especially sidewalks.
- Please help medical providers, fire and police keep participants and spectators safe by making sure they always have access onto the course and sidewalks.
- Please do not block race officials and announcers' line of site with team vehicles or team tents. No team tents within 200 meters of the finish line unless prearranged with the promoter. Please adhere to directions from race staff regarding any tent placement.
- When parking on or using any private property, always secure permission from the property owner.

## NEUTRAL SUPPORT

Location of the pit will be communicated daily and are marked on maps below. Riders may cut the crit course to report to the pit but may not ride backwards on the course at ANY TIME! Please return any equipment used immediately following the conclusion of the race and be courteous to your neutral mechanics – they could save your race!

There will be a follow wheel car for each field in the road race. Riders are responsible for providing spare wheels in case of a flat.

# COURSE DIAGRAMS

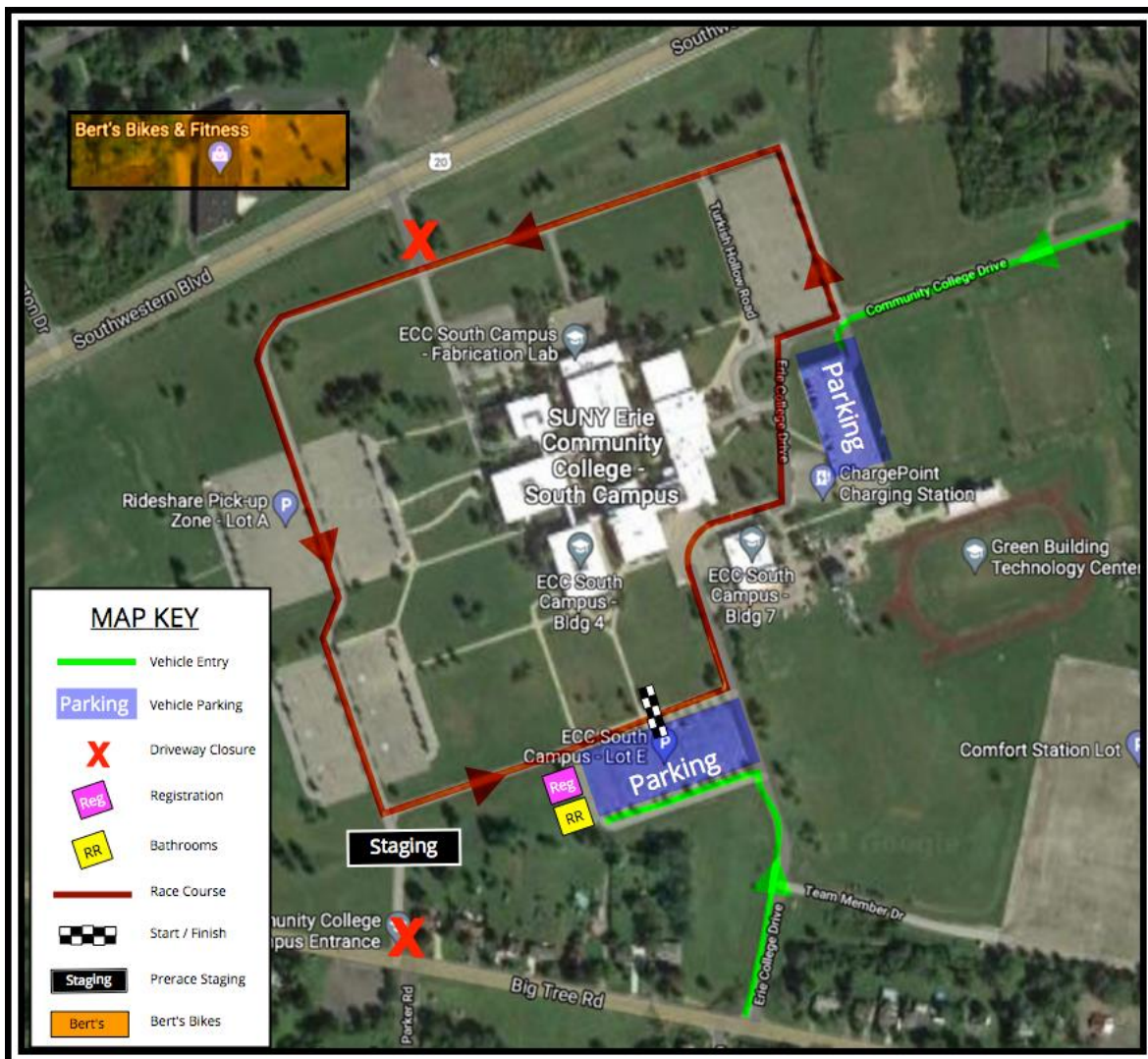
## DAY 1: SUNY Erie Criterium

[BBC SUNY Erie Criterium | 1.0 mi Road Cycling Route on Strava](#)

**Course Description:** A new course for Buffalo around the Erie Community College south campus. This is a 1-mile-long closed loop that is generally flat. Featuring a technical “chicane lane” on the east side of the course, and a steady 20’ incline from the final turn to the finish.

Please enter parking area from Big Tree Road to Erie College Drive or from Abbott Rd to Community College Drive as indicated by the green arrows on the map.

Wheel pit will be near the start/finish, support provided by [Bert’s Bikes and Fitness](#).

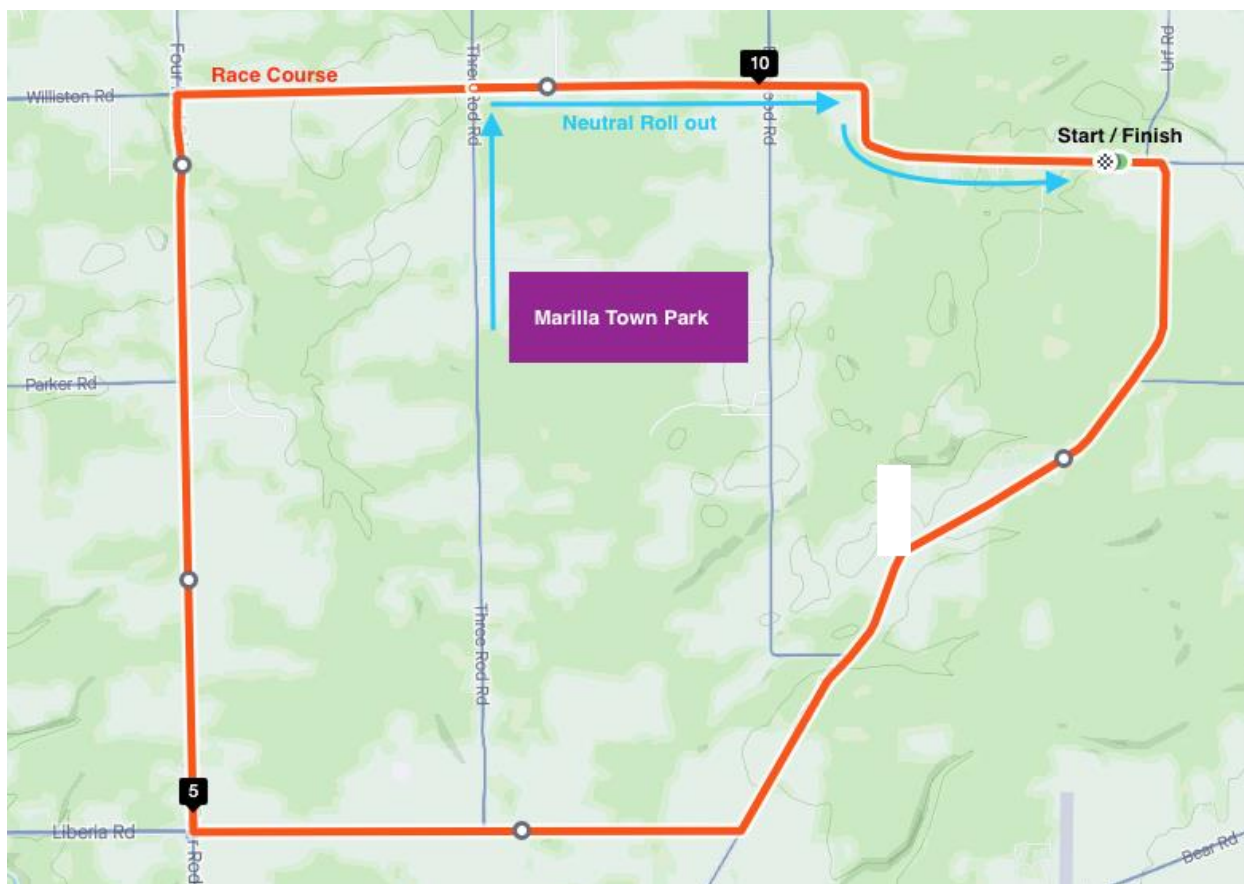


## Day 2: Marilla Road Race

[BBC Marilla Road Race | 11.4 mi Road Cycling Route on Strava](#)

**Course Description:** A rolling 11.4-mile circuit with 722' of elevation gained each lap. Most of the elevation gained being on the North side of the course. Quiet country roads with minimal traffic make this an ideal road race location.

Each field will be staged at the Marilla town park. From there they will have a ~2-mile neutral roll out to the start/finish line. Chief referee will provide clarification prior to the start of the race.



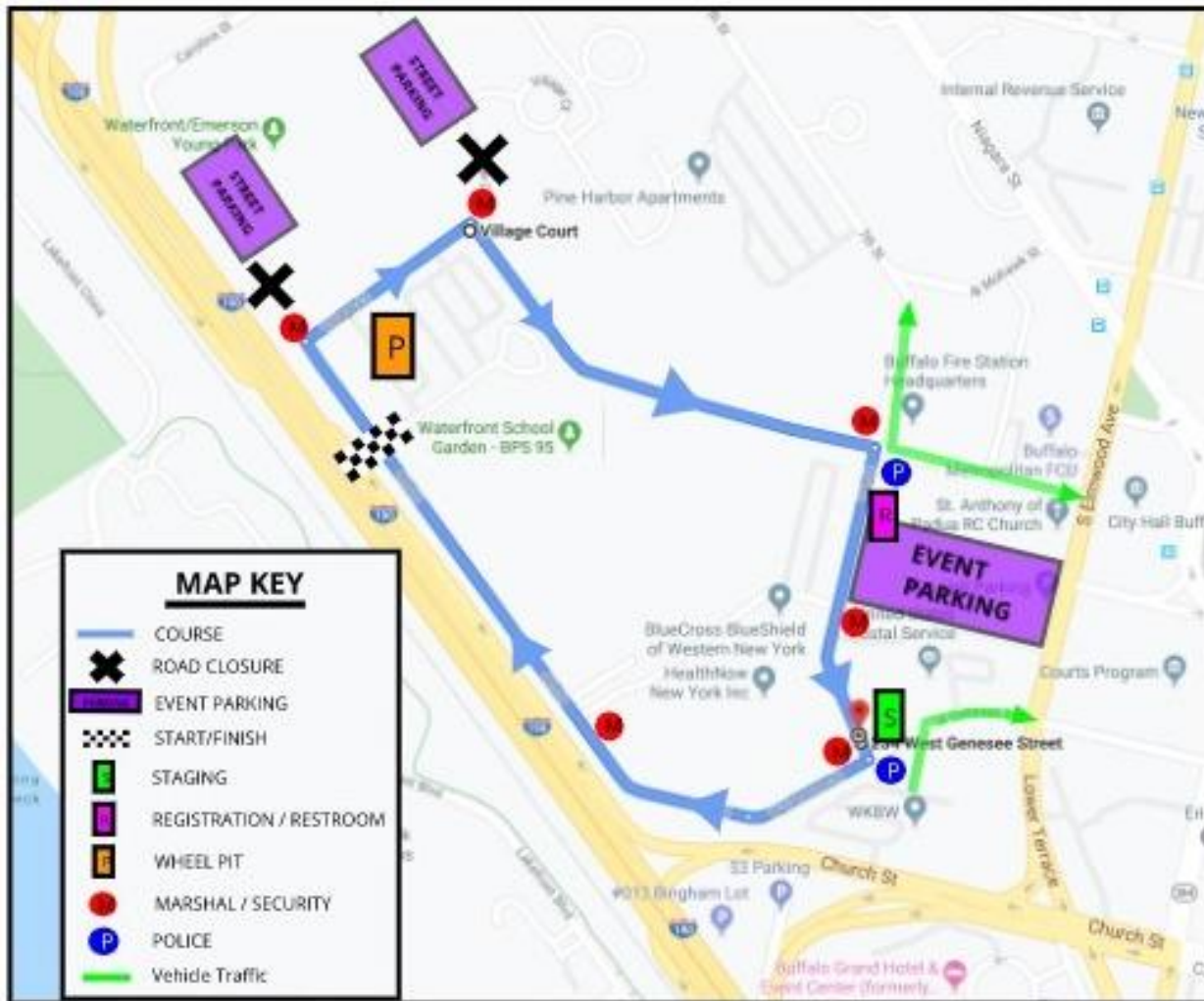


## DAY 3: Downtown Criterium

[Buffalo Downtown Criterium | 0.8 mi Road Cycling Route on Strava](#)

**Course Description:** A flat and fast crit run in an unconventional clockwise direction. Clip it and rip it through turns one and two but be careful not to lose focus out of turn three where the queen city’s architecturally famous city hall will be demanding your attention. Wind through turns four to six and after exiting seven, you’ll find yourself 200 meters to the finish...

Wheel pit will be near start/finish, support provided by [Campus WheelWorks](#).



## OMNIUM SCORING

Racers may register and compete in any number of races. For each race, all riders will be eligible for the daily prize list. Every race in the omnium follows the same scoring structure.

The Tour of Buffalo will be a run as an omnium with points awarded based on a rider's placing in each race. Overall placing will be determined by series cumulative point totals and recognized on the podium on the final day of the series. To be eligible for the Omnium prize lists, racers do NOT have to compete in every race.

Points will be available in each of the three races via daily finishing place and points primes. The omnium rankings are determined in order of the sum of the points earned at the end of the race series. Points will be awarded to the finishers of each race per the points structure explained in the table below.

In the case of a tie in total points, the tie will be broken in favor of the rider who has (A) the most first place finishes, if still tied, then the most second place finishes, and so on. If still tied, (B) the highest placing in the last race. All race places will be determined and ruled final by the presiding USA Cycling Chief Judge.

Place	Points Awarded
1 <sup>st</sup>	25
2 <sup>nd</sup>	22
3 <sup>rd</sup>	20
4 <sup>th</sup>	18
5 <sup>th</sup>	17
6 <sup>th</sup>	15
7 <sup>th</sup>	14
8 <sup>th</sup>	13
9 <sup>th</sup>	12
10 <sup>th</sup>	11
11 <sup>th</sup>	10
12 <sup>th</sup>	9
13 <sup>th</sup>	8
14 <sup>th</sup>	7
15 <sup>th</sup>	6
16 <sup>th</sup>	5
17 <sup>th</sup>	4
18 <sup>th</sup>	3
19 <sup>th</sup>	2
20 & on	1

Prime Place	Points
1 <sup>st</sup>	3
2 <sup>nd</sup>	2
3 <sup>rd</sup>	1

## **RESULTS**

Individual race results will be posted on site and online shortly after the race of interest. Participants will receive an email when their category results have been posted. Protests on order of finish will be accepted by the Chief Judge up to 15 minutes after they have been posted and the email sent.

Omnium results will be update online once the individual results have been finalized. All daily prizes and awards will be distributed no earlier than 15 minutes after the officials have declared the results final (except as noted below). Protests must be made to the Chief Judge within 15 minutes of results postings.

The prizes/awards for the overall points series will be distributed on the final day of the series no earlier than 15 minutes after the officials have declared them final.

## **PODIUM PROTOCOL**

The top-three finishers from each category are requested to present themselves for podium protocol immediately following their race, or per the direction of race staff.

## **CONSENT FOR PHOTOGRAPHY/VIDEOGRPAHY**

This is formal notice that all images of entrants in the race or onsite at the race venue may be used by the promoter and its agents for advertising, trade, and any other lawful purposes. Riders not wanting to allow the use of their image can do so by not entering the race. In exchange for entry in the race, each entrant gives consent for use of his/her name and photographic likeness to the promoter and its agents.

## APPENDIX A

	Men P/1/2/3		Women P/1/2/3		Masters 45+		Masters 55+	
Place	Daily	G. C.	Daily	G. C.	Daily	G. C.	Daily	G. C.
1 <sup>st</sup>	\$120	\$360	\$120	\$360	Prizes	Trophies	Prizes	Trophies
2 <sup>nd</sup>	\$80	\$280	\$80	\$280	Prizes	Trophies	Prizes	Trophies
3 <sup>rd</sup>	\$60	\$180	\$60	\$180	Prizes	Trophies	Prizes	Trophies
4 <sup>th</sup>		\$100		\$100				
5 <sup>th</sup>		\$80		\$80				
<b>Crit Primes:</b>	2x \$50		2x \$50					
<b>Daily Total:</b>	\$400		\$400					
<b>Totals:</b>	\$1,100	\$1,000	\$1,100	\$1,000				
<b>Grand Total:</b>	\$2,100		\$2,100					

	Men / Women Cat 4/Novice		Men Cat 3/4	
Place	Daily	G.C.	Daily	G.C.
1 <sup>st</sup>	Prizes	Trophies	Prizes	\$220
2 <sup>nd</sup>	Prizes	Trophies	Prizes	\$160
3 <sup>rd</sup>	Prizes	Trophies	Prizes	\$120
<b>Grand Total:</b>			\$500	

**Event Grand Total Purse = \$4,700**

## EVENT SPONSORS

